



**Extentrix** Enhancements

for Citrix Web Interface



User's Manual

V 1.0.0

## Notice

Extentrix Systems, FZE makes no representations or warranties with respect to the contents or use of this publication. Extentrix specifically disclaim any express or implied warranties, merchantability, or fitness for any particular purpose. Extentrix reserve the right to make any changes in specifications and other information contained in this publication without prior notice and without obligation to notify any person or entity of such revisions or changes.

© Copyright 2007 All Rights Reserved

No part of this publication may be reproduced or transmitted in any form or by any means, electronic or mechanical, including photocopying, recording, or information and retrieval systems, for any purpose other than the purchase's personal use, without express written permission of:

Extentrix Systems, FZE  
P.O.Box 43659  
Dubai, UAE  
<http://www.extentrix.com>

The following marks are service marks, trademarks or registered trademarks of their respective owners:

Mark	Owner
Citrix®, ICA®, Presentation Server 4.0®, Web Interface®, WinFrame®, Program Neighborhood®, Citrix Developer Network™, Citrix Alliance Partners™	Citrix Systems, Inc.
Microsoft®, Windows®, Windows NT®, ActiveX®, Windows CE®, Internet Explorer™	Microsoft Corporation

## Contents

<b>CONFIGURATION PREFERENCES .....</b>	<b>3</b>
HOW TO CHANGE THE CONFIGURATION FILE? .....	3
<b>EXTENTRIX SETTINGS .....</b>	<b>5</b>
<b>ABOUT EXTENTRIX .....</b>	<b>9</b>

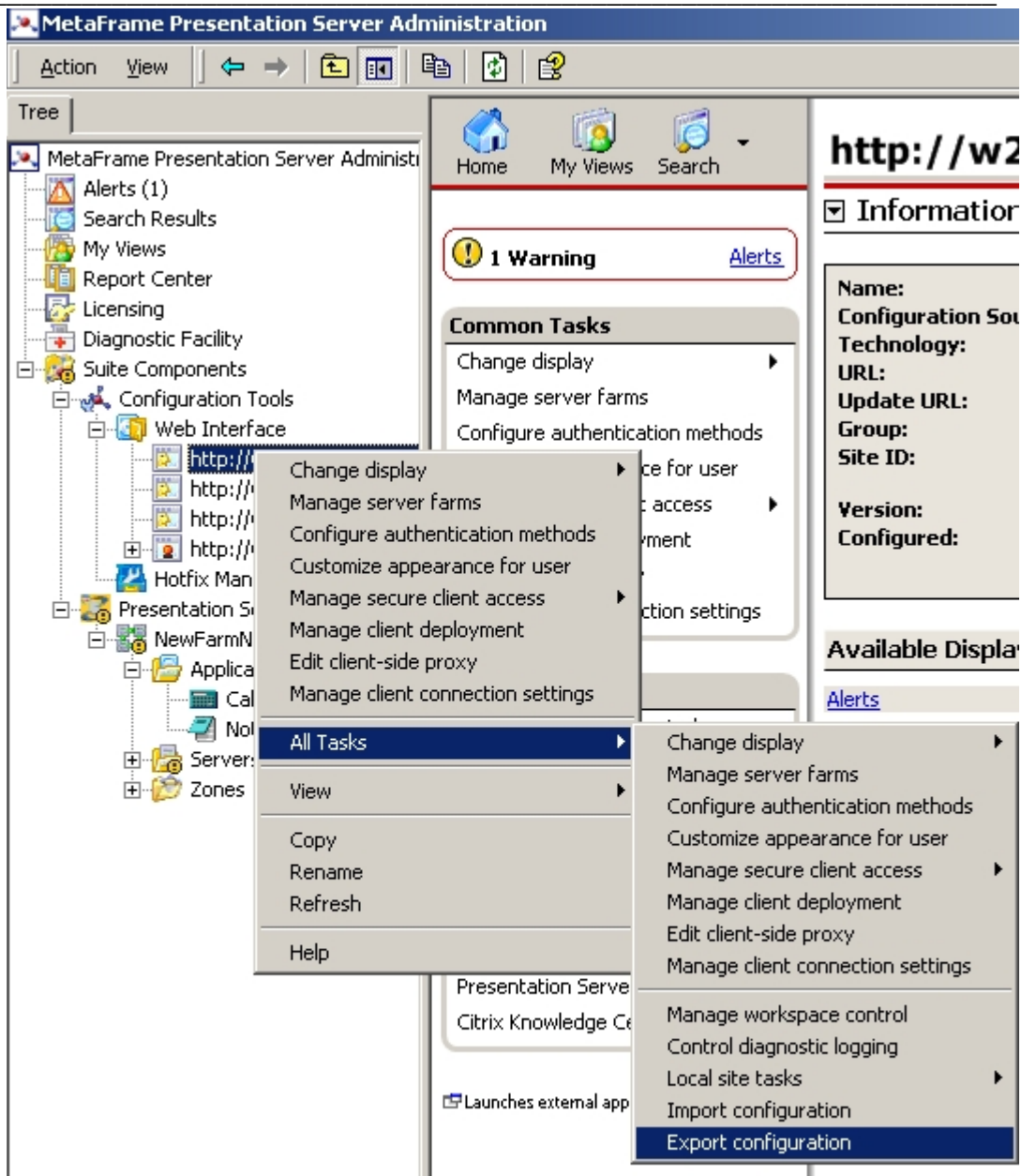
## Configuration Preferences

### How to change the configuration file?

When creating a website for the Citrix Presentation Server you have to choose where to keep the configuration file. You have the option to keep it as a separate file on the hard disk or to use a centralized configuration where the configurations will be stored on the IIS server.

Please follow the following steps if you would like to customize the WEB Interface default settings:

- If you are using a standalone file:
  - Open the configuration file which will be located in (%website folder% / conf / webinterface.conf).
  - Add or modify the required options.
  - Save the changes.
- If you are using the centralized storage:
  - Open Citrix "Metaframe Presentation Server Administration".
  - Click on "Configuration Tools"
  - Expand the " Web Interface" node.
  - Right click the wanted website and choose "Export Configuration" as shown in the picture below.



- You will be prompted to where to save the configuration file, choose a location and then click save and you will get the webinterface.conf file.
- Open it using any editor and add or modify the values you want. Please see below for the new settings that have been added by Extentrix to give you more control over the Interface.
- Finally import the updated file again to the server. You can do that by following the steps above and choose Import option.

## Extentrix Settings

Below are the settings you can modify by using Extentrix enhancements support code. To understand Extentrix property functionality, please refer to tables 2.0, 2.1 and 2.2:

**Table 1.0**  
Extentrix Property Settings

Extentrix Property Name	Citrix Property Name	Values
WindowSize	Window size	Default (NoPreference), 640x480, 800x600, 1024x768, 1280x1024, 1600x1200, fullscreen, seamless, custom, percent
Audio	Audio Quality	AudioDefault, AudioHigh, AudioLow, AudioMedium, AudioOff
Bandwidth	Connection Speed	custom, high, low, medium, med_high
ColorDepth	Color Depth	0,1,2,4,8
PrinterMapping	Enable printer mapping	On, off
PassThroughKey	Passthrough key	Local,remote,fullscreen
VirtualCOMPort	Virtual COM Port	On, off
AppColumns	Columns of Applications	Any number
Layout	Layout	Normal, auto, compact
RememberFolder	Remember folder	On, off
ShowFolder	Show folder	On, off
ShowName	Show app name	On, off
ShowIcon	Show app Icon	On, off
ShowDescription	Show app Description	On, off
PreferedLocale	Language	The first two characters of the language
LogOffButton	Log off button	On, off

**Table 2.0**  
Citrix Presentation Preferences

A	Language	<b>Desc</b> : the language of the labels
		<b>Values</b> : the first two letters from the desired language e.g. en, fr, es , ... or the full name of the language
B	Layout	<b>Desc</b> : the overall layout of the pages (how messages and controls are organized in the page) <b>Values</b> : compact (the welcome and message center sections are omitted), normal, auto (automatic resizing according to your browser size)
C	Remember folder location	<b>Desc</b> : specifies whether to remember or not remember the opened folder on the last session <b>Values</b> : on, off
D	Show current folder location	<b>Desc</b> : displays the full path of the currently opened folder <b>Values</b> : on, off
E	Columns of Applications	<b>Desc</b> : specify the number of columns to display on the applications explorer <b>Values</b> : any integer
F	Icons	<b>Desc</b> : show/hide the icons of the Apps <b>Values</b> : on, off
G	Names	<b>Desc</b> : show/hide the Names of the Apps <b>Values</b> : on, off
H	Descriptions	<b>Desc</b> : show/hide the Description of the Apps <b>Values</b> : on, off

**Table 2.1**  
Citrix Connection Preferences

A	Window Size	<b>Desc</b> : Select a window size from a provided options <b>Values</b> : default, 640x480, 800x600, 1024x768, 1280x1024, 1600x1200, fullscreen, seamless, custom, percent
B	Passthrough	<b>Desc</b> : windows key combinations

	<b>Keys</b>	<b>Values</b> : local, remote, Full Screen mode only
C	Virtual COM Port	<b>Desc</b> : to synchronize the PDA machine with applications through tethered USB <b>Values</b> : on, off
D	Connection Speed (bandwidth)	<b>Desc</b> : selects appropriate bandwidth <b>Values</b> : custom, high, low, medium, med_high
E	Window Color	<b>Desc</b> : Color Depth <b>Values</b> : 0 (no preferences), 1 (16 colors), 2 (256 colors), 4 (16 bits), 8 (24 bits)
F	Audio Quality	<b>Desc</b> : Audio Quality <b>Values</b> : no preference, High, Low, Medium, Off
G	Printer Mapping	<b>Desc</b> : Enable / Disable Printer Mapping <b>Values</b> : on, off

Table 2.2  
Citrix Workspace Control

A	Log off Button	<b>Desc</b> : What to do when pressing the log off button <b>Values</b> : on, off
---	----------------	--

---

## Figure 1.0

Example of the new Extentrix property names

```
# Extentrix :  
WindowSize =800x600  
Audio =AudioLow  
Bandwidth =none  
ColorDepth =4  
PrinterMapping =off  
PassThroughKey =remote  
VirtualCOMPort =off  
AppColumns =10  
Layout =normal  
RememberFolder =off  
ShowFolder =on  
ShowName =off  
ShowIcon =on  
ShowDescription =on  
PreferredLocale =en  
LogOffButton =off
```

## About Extentrix

Founded in 2006, Extentrix Systems is a leading software development company specializing in virtualization and developing custom software solutions for Microsoft and Citrix customers. Established by former software engineers at Citrix, Extentrix have developed access solutions that simplify and speed users' access to Terminal Services and Citrix platforms.

Extentrix Systems is privately held with company headquarters in RAK, UAE. For more information, please visit the company's Web site at [www.extentrix.com](http://www.extentrix.com) or call +971-4-211-5490.