



## Extentrrix Web Access Management Console



User's Guide

## Notice

Extentrix Systems, FZE makes no representations or warranties with respect to the contents or use of this publication. Extentrix specifically disclaims any express or implied warranties, merchantability, or fitness for any particular purpose. Extentrix reserves the right to make any changes in specifications and other information contained in this publication without prior notice and without obligation to notify any person or entity of such revisions or changes.

© Copyright 2007 All Rights Reserved

No part of this publication may be reproduced or transmitted in any form or by any means, electronic or mechanical, including photocopying, recording, or information and retrieval systems, for any purpose other than the purchase's personal use, without express written permission of:

Extentrix Systems, FZE  
 P.O.Box 43659  
 Dubai, UAE  
<http://www.extentrix.com>

The following marks are service marks, trademarks or registered trademarks of their respective owners:

Mark	Owner
Citrix®, ICA®, Presentation Server 4.0®, Web Interface®, WinFrame®, Program Neighborhood®, Citrix Developer Network™, Citrix Alliance Partners™	Citrix Systems, Inc.
Microsoft®, Windows®, Windows NT®, ActiveX®, Windows CE®, Internet Explorer™	Microsoft Corporation

## Table of Contents

<b>INSTALLATION .....</b>	<b>3</b>
REQUIREMENTS .....	3
INSTALLING AND RUNNING THE SAMPLE.....	3
<b>USING WEB ACCESS MANAGEMENT CONSOLE.....</b>	<b>6</b>
<b>MANAGING APPLICATIONS, SERVERS, AND ZONES IN MULTIPLE FARMS.....</b>	<b>7</b>
<b>SUPPORT .....</b>	<b>12</b>
<b>ABOUT EXTENTRIX .....</b>	<b>13</b>

## Installation

### Requirements

- Operating systems:  
Extentrix Web Services 2.0 – Application Edition can be installed on any of the following systems:
  - Microsoft® Windows Server™ 2003, Standard Edition SP2
  
- Others:  
ASP.net version 2.  
IIS ( Internet Information Services)

### Installing and Running the Sample

1. Extract the zip file any where on you computer and give it the following name for simplicity ExtentrixWebAccessConsole
2. Go to **Start ->Control Panel -> Administrative Tools -> Internet Information Services**
3. Double click on **Web Sites** -> Right click on default websites -> **New -> Virtual Directory ...** (See Fig. 1)

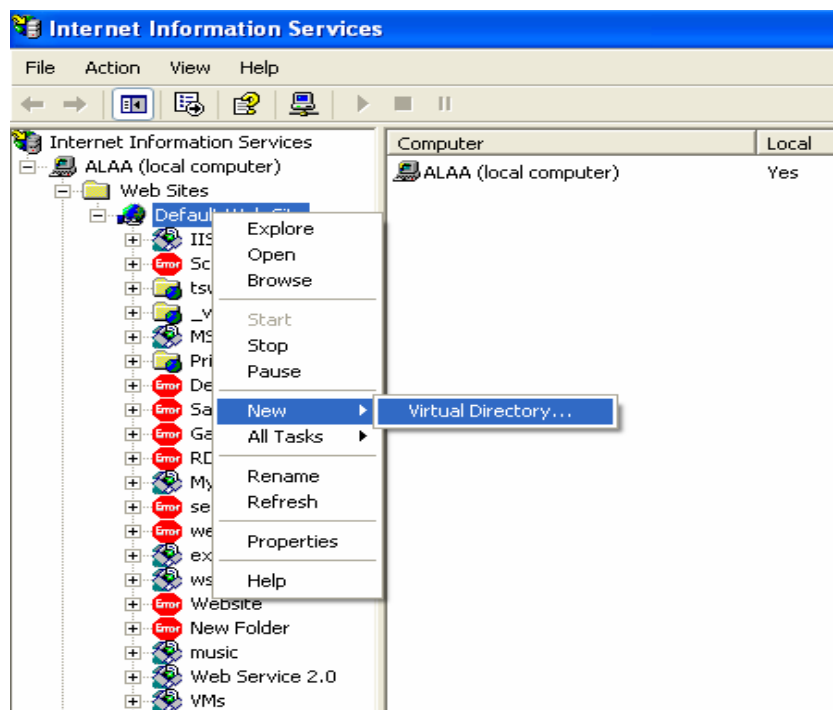
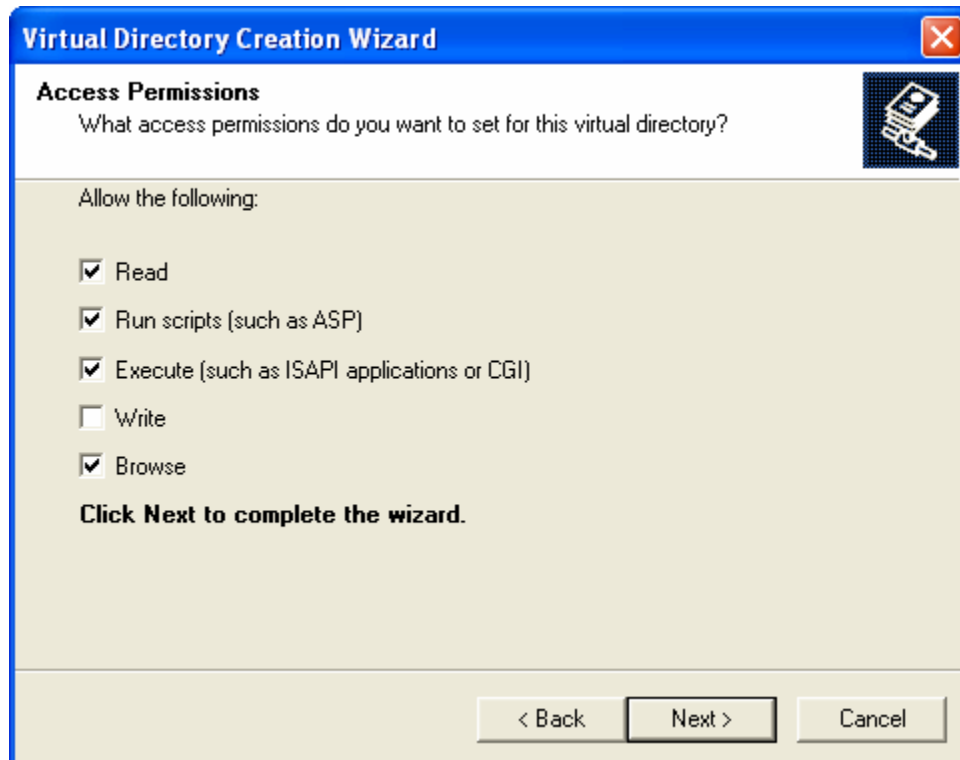


Fig. 1

4. Give it a suitable name we will call it ExtentrixWebAccessConsole also.
5. Browse for the directory ExtentrixWebAccessConsole
6. Then choose **Next** and modify Access permissions to the virtual directory to browse and execute permissions. (See the Figure below)



**Fig. 2**

7. Click **Next** -> **Finish**. The virtual directory is now established.
8. And now right click on the virtual directory that we have just made, select properties and make sure that directory browsing option is checked from virtual directory tab. Also make sure that ASP.NET version is 2.0 from ASP.NET tab.
9. To run the web services, right click on Log.aspx then click **Browse** (See Fig. 3)

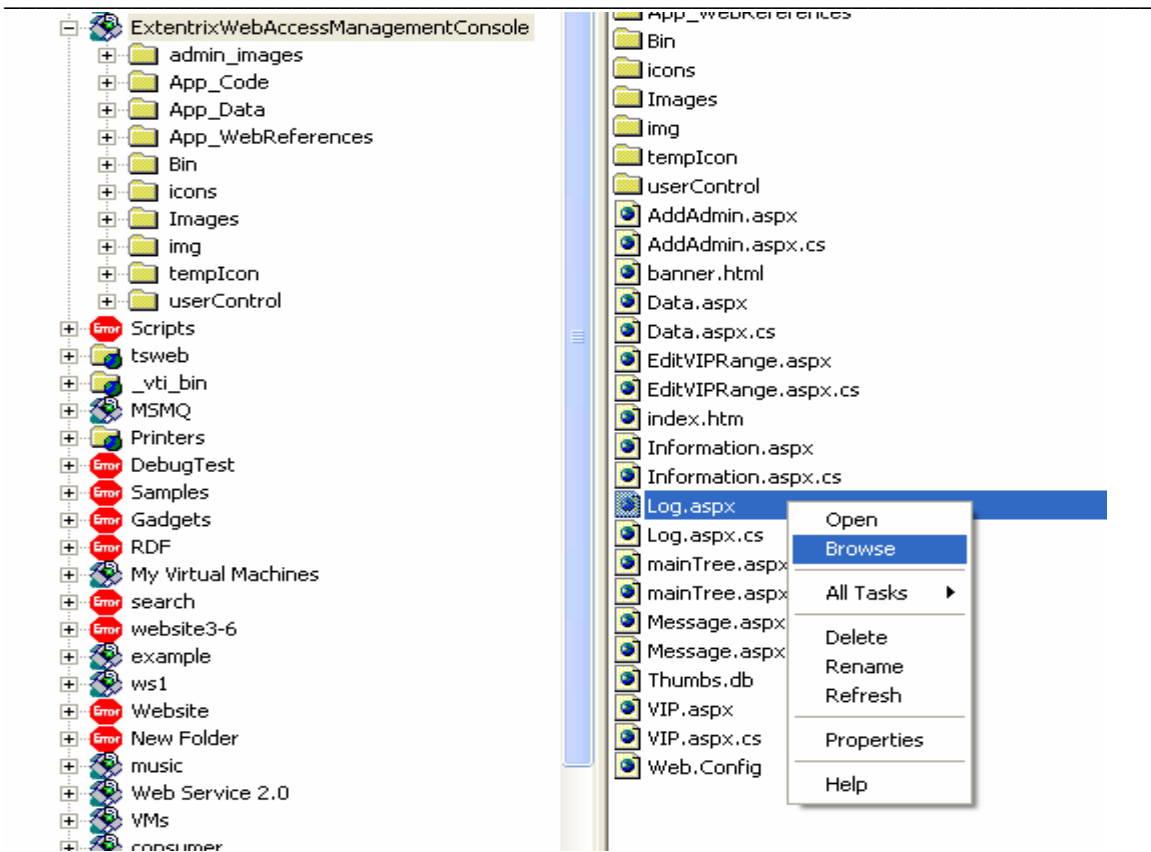


Fig. 3

At this moment you will be able to start using the ExtentrixWebAccessManagementConsole as the following:

## Using Web Access Management Console

Extentrix web services provides a comprehensive set of tools for managing servers, farms, published resources, and connections using the web browser. So, the administrator is not to be acting on the server directly. The machine that the Administrator uses to manage the server remotely using the Extentrix web services is also not to have Citrix Presentation server installed on it.

All of that makes Extentrix web services a WOW jump.

This web page will appear asking for user name, password and domain information. Fill them and click login bottom. (Fig. 4)



The image shows the Extentrix Web Access Management Console login page. At the top, the Extentrix logo is displayed. Below the logo is a blue gradient bar with a white box containing the text "Web Access Management Console". Underneath this bar are three input fields: "Username :", "Password :", and "Domain :". Below the "Domain :" field is a blue "Login" button. At the bottom of the page, there is a blue bar with white text that reads "Copyright © 2007 Extentrix Systems. All rights reserved". Above this bar, there is a line of text: "In case of any login troubles, please Contact Extentrix Systems [helpdesk](#)".

**Fig. 4**

1. A new web page will be displayed on front of you if you have the suitable credentials to access the server. This screen is divided into two panes:
  - a. The left one is to view main controls that can be managed via the web service, servers, farms, published resources, and connections.
  - b. The right pane is to view details and options that are associated with the selected item to the left.
2. Now you have an administration tool to the server, without being in front of the server. You can manage the server remotely, and from any where remotely.

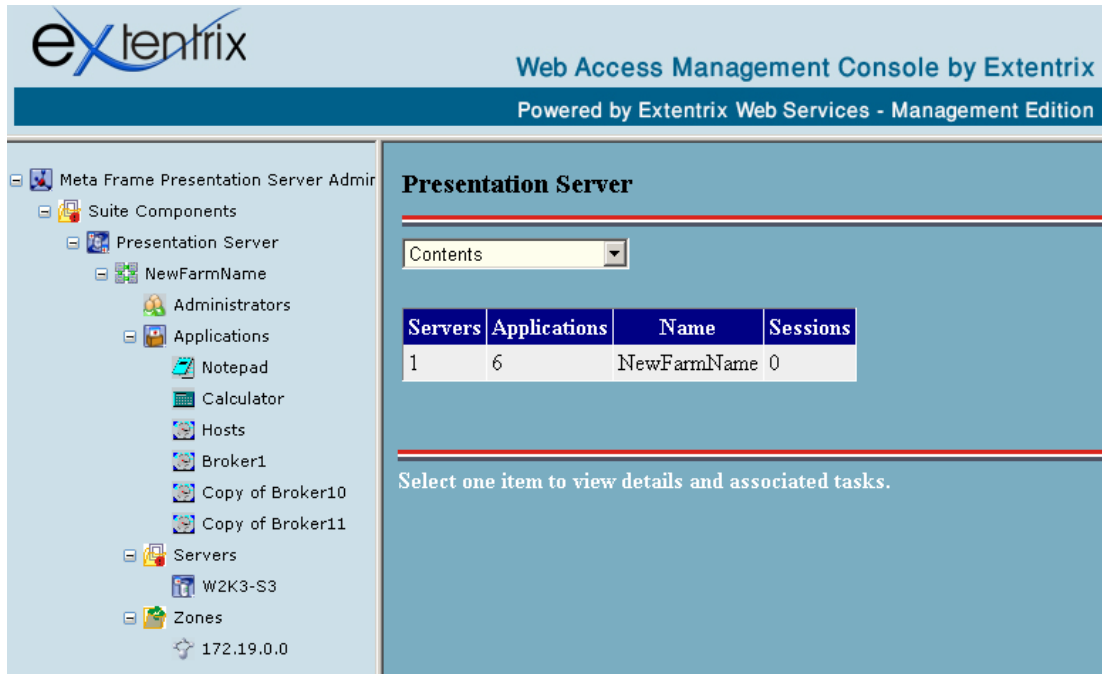
## Managing Applications, Servers, and Zones in Multiple Farms

Use Extentrix web services to manage the applications, zones, and servers in multiple farms in your enterprise. Farms and their servers are controlled by the Presentation Server snap-in.

View and change details about any farm or its applications, servers or zones.

You can:

- Display Available Farms. (See Fig. 5)



Web Access Management Console by Extentrix  
Powered by Extentrix Web Services - Management Edition

Meta Frame Presentation Server Admin

- Suite Components
  - Presentation Server
    - NewFarmName
      - Administrators
      - Applications
        - Notepad
        - Calculator
        - Hosts
        - Broker1
        - Copy of Broker10
        - Copy of Broker11
      - Servers
        - W2K3-S3
      - Zones
        - 172.19.0.0

**Presentation Server**

Contents

Servers	Applications	Name	Sessions
1	6	NewFarmName	0

Select one item to view details and associated tasks.

Fig. 5

- Display Available Servers (See Fig. 6)

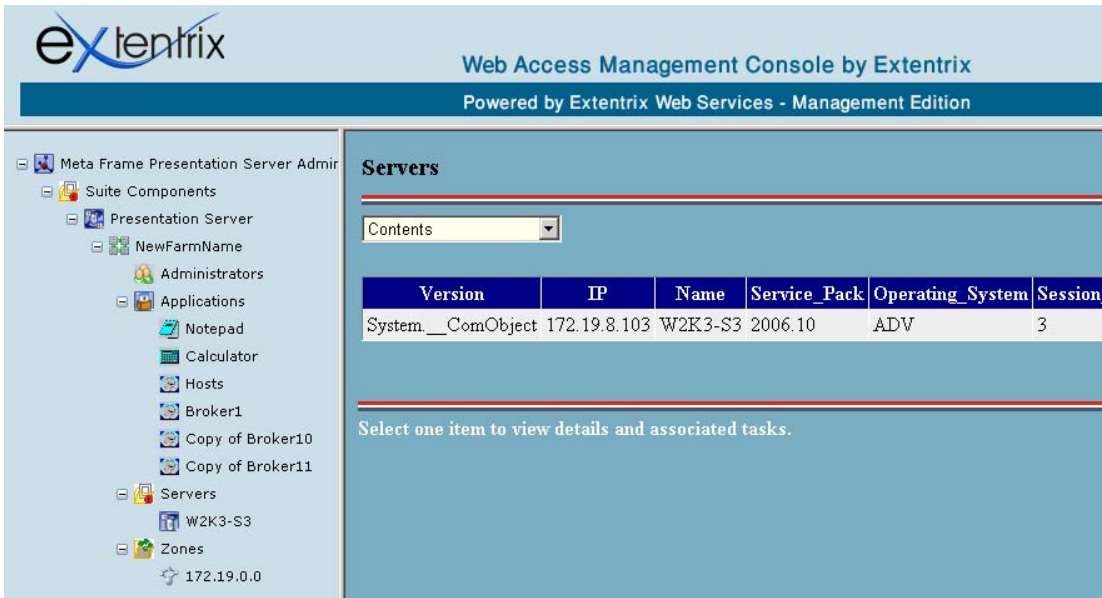


Fig. 6

- Display Servers read only properties. (See Fig. 7)

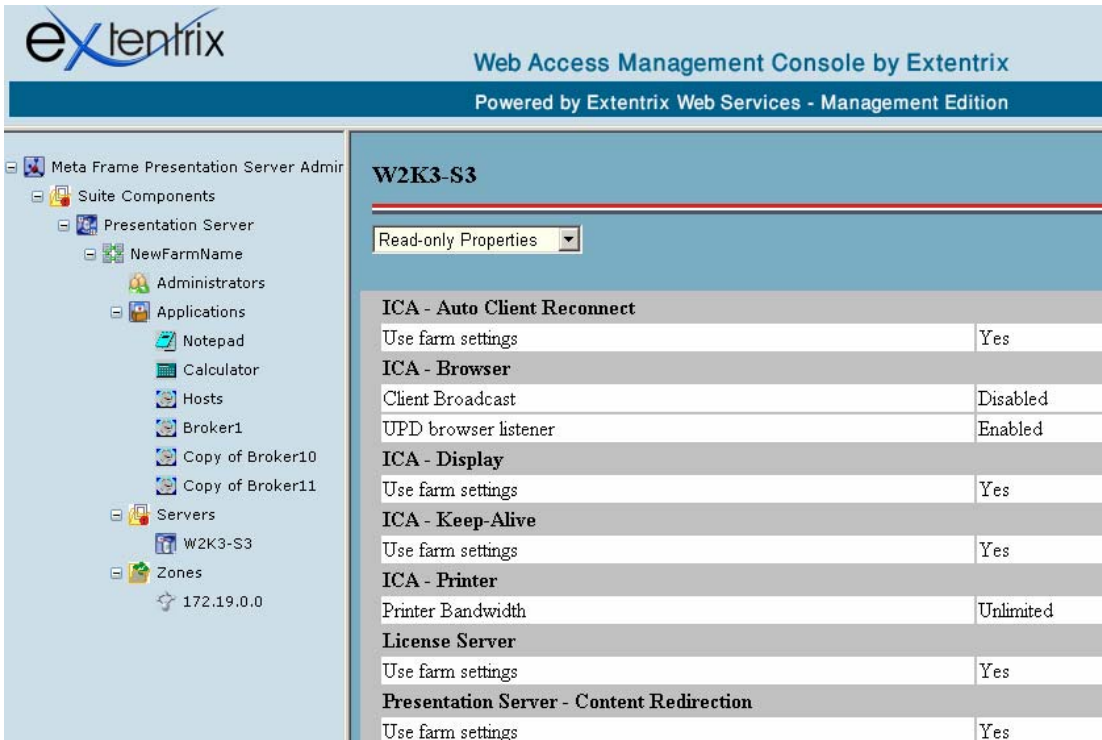


Fig. 7

- Display connected users.

- Display Active sessions.(See Fig. 8)

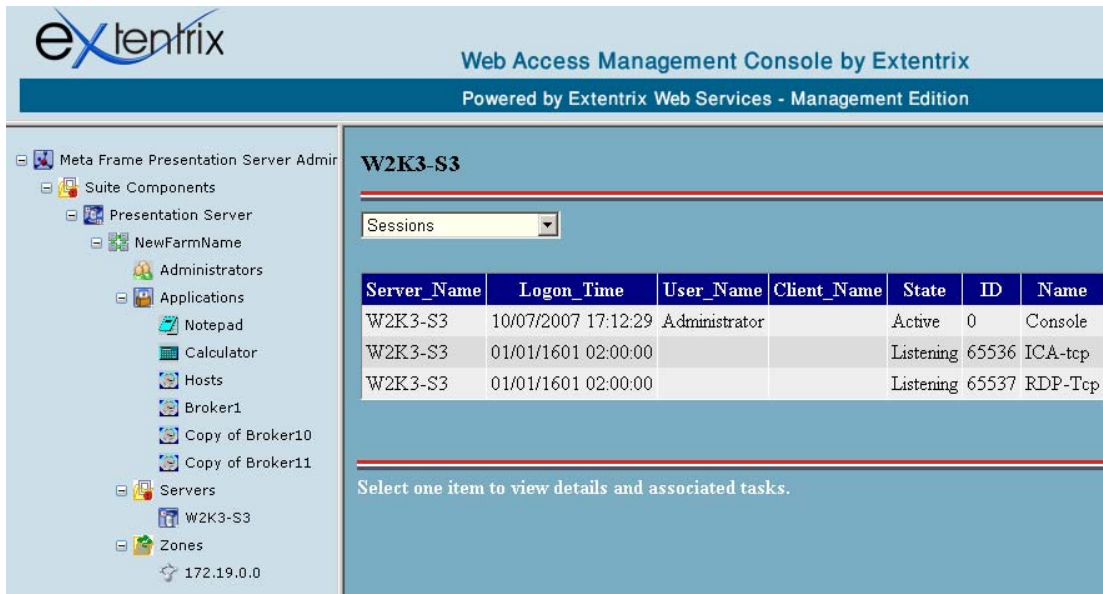


Fig. 8

- Display Processes and terminate any on selected server. (See fig. 9)

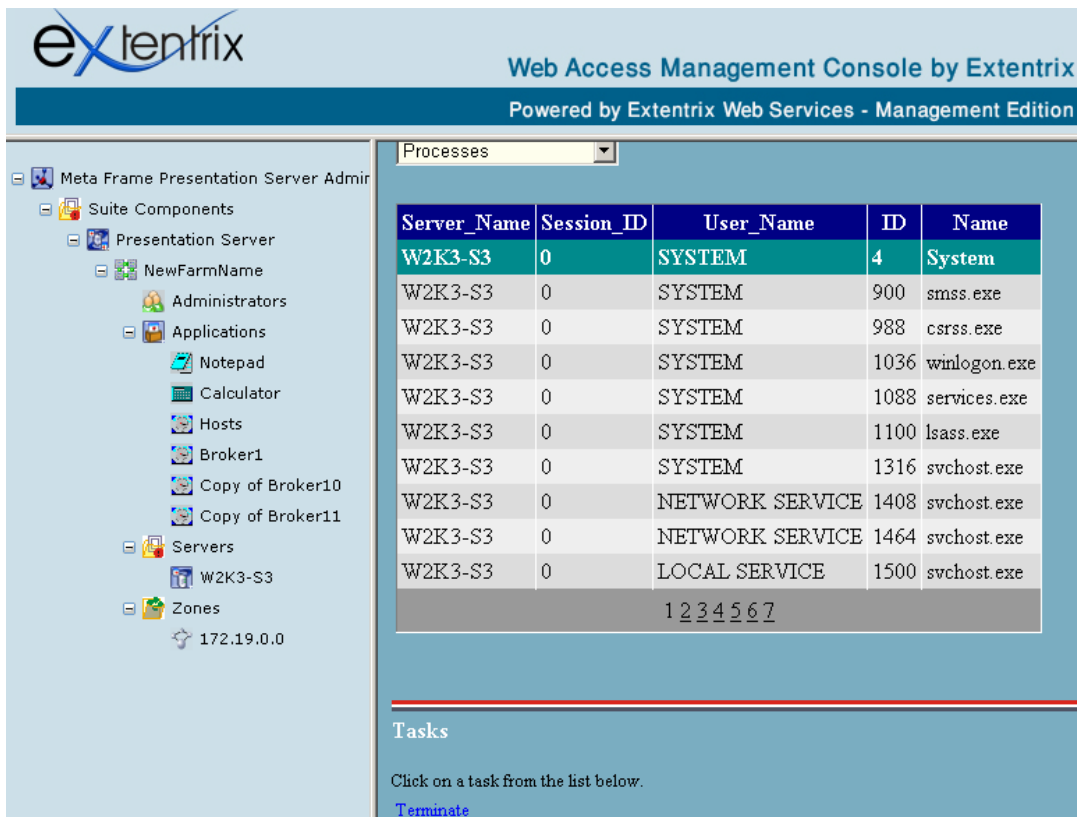


Fig. 9

- Display Published Applications details. (See fig. 10)

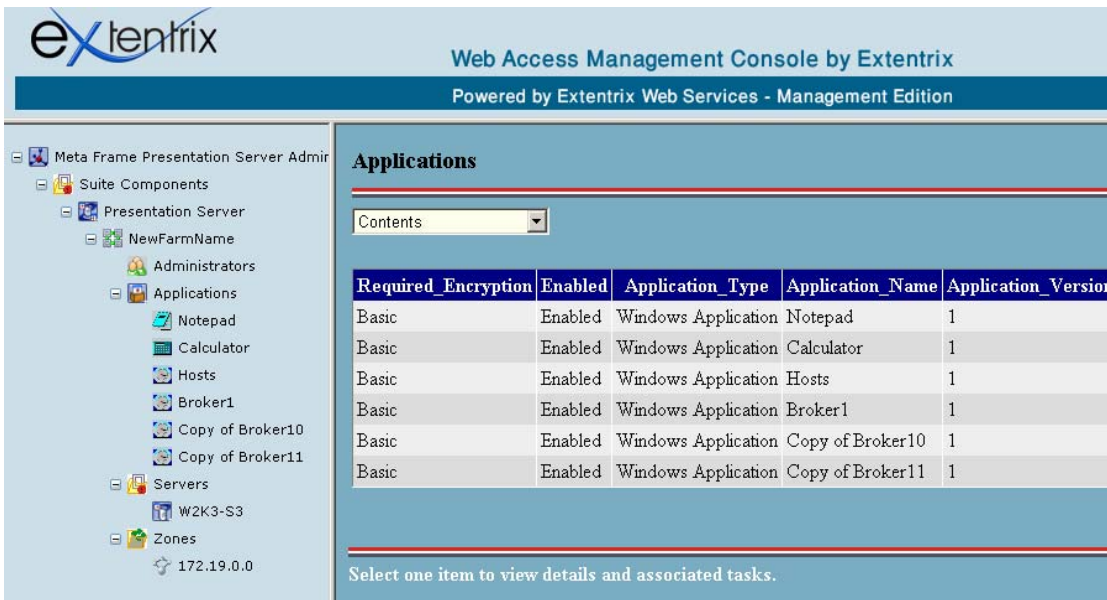


Fig. 10

- Enable or Disable one or more of Published Applications.(See Fig.11)

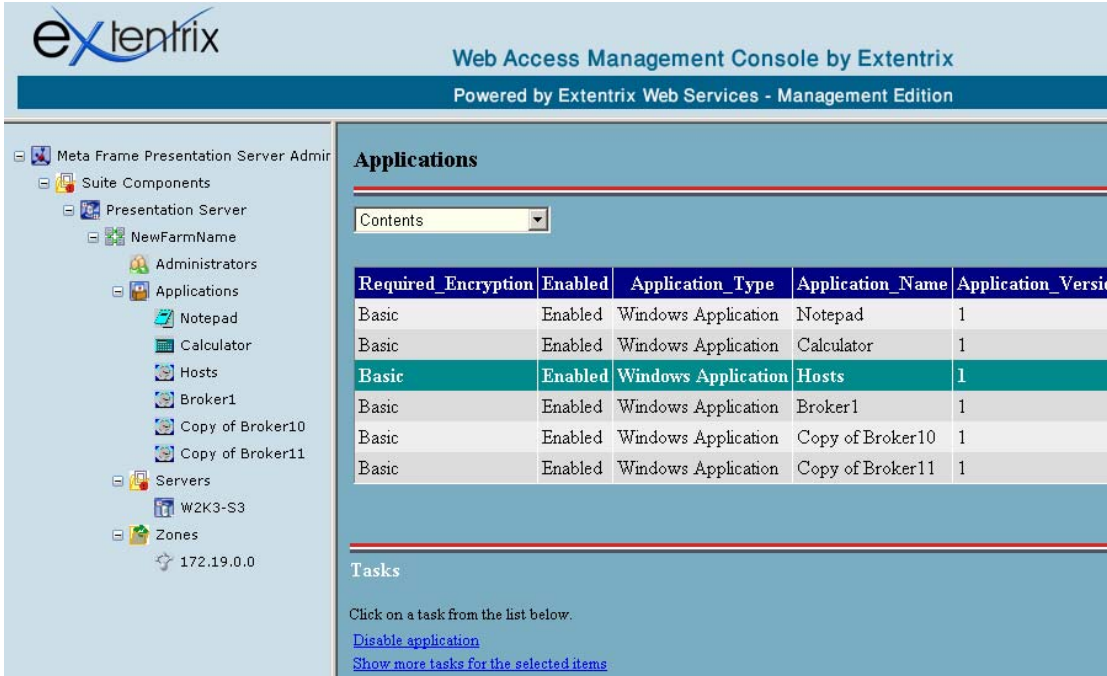


Fig. 11

- Display Administrators list by details. (See fig. 12)

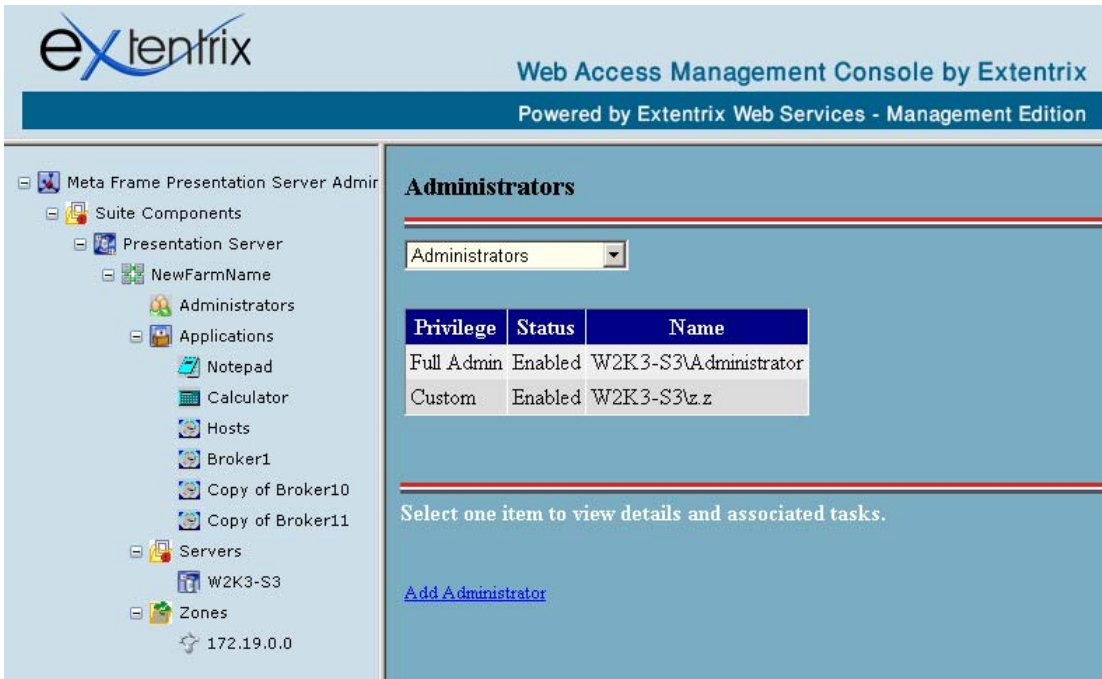


Fig. 12

- Delete, Enable or Disable one or more of Administrators. (See fig. 13)

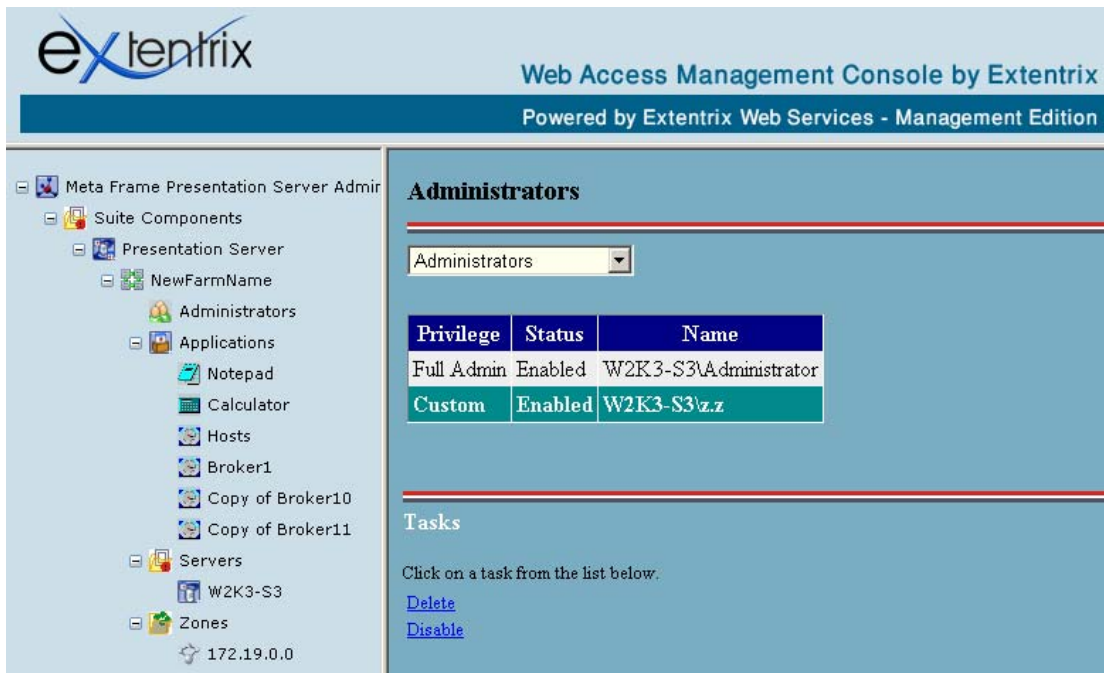


Fig. 13

## Support

For any support issues, please email your questions or problems to:  
[support@extentrix.com](mailto:support@extentrix.com)

## About Extentrix

Founded in 2006, Extentrix Systems is a leading software development company specializing in virtualization and developing custom software solutions for Microsoft and Citrix customers. Established by former software engineers at Citrix, Extentrix have developed access solutions that simplify and speed users' access to Terminal Services and Citrix platforms.

Extentrix Systems is privately held with company headquarters in RAK, UAE. For more information, please visit the company's Web site at [www.extentrix.com](http://www.extentrix.com) or call +971-4-211-5490.

For additional support, please contact Extentrix at [info@extentrix.com](mailto:info@extentrix.com) or by visiting the company's home page at <http://www.extentrix.com/>.