



Extentrrix Toolbar for Citrix



Administrator's Guide

V 1.0.0

NOTICE

Extentrix Systems, FZE makes no representations or warranties with respect to the contents or use of this publication. Extentrix specifically disclaims any express or implied warranties, merchantability, or fitness for any particular purpose. Extentrix reserves the right to make any changes in specifications and other information contained in this publication without prior notice and without obligation to notify any person or entity of such revisions or changes.

© Copyright 2008 All Rights Reserved

No part of this publication may be reproduced or transmitted in any form or by any means, electronic or mechanical, including photocopying, recording, or information and retrieval systems, for any purpose other than the purchase’s personal use, without express written permission of:

Extentrix Systems, FZE

P.O.Box 4404

Dubai, UAE

<http://www.extentrix.com>

The following marks are service marks, trademarks or registered trademarks of their respective owners:

Mark	Owner
Citrix®, ICA®, Presentation Server 4.0®, Web Interface®	Citrix Systems, Inc.
Microsoft®, Windows®, Windows NT®, Internet Explorer™	Microsoft Corporation

TABLE OF CONTENTS

NOTICE..... 1

TABLE OF CONTENTS 2

SAP ENTERPRISE PORTAL CONFIGURATION 3

PREREQUISITES 4

CREATE EXTENTRIX TOOLBAR FOR CITRIX IVIEW 5

IMPORT EXTENTRIX TOOLBAR FOR CITRIX TO THE PORTAL 5

DEFINE AN ALIAS FOR THE SYSTEM 5

 EDIT SYSTEM WEB AS PROPERTY 6

PRE-INSTALL STEPS 6

PLACE THE IVIEW IN A PAGE 7

CONFIGURE USER MAPPING 9

LICENSE ACTIVATION..... 11

DEPLOY EXTENTRIX TOOLBAR FOR CITRIX IVIEW..... 16

EDIT EXTENTRIX TOOLBAR FOR CITRIX CONFIGURATION SETTINGS 17

SUPPORT ICONS WITH SIZE 16*16 19

ENABLE 32-BIT COLOUR ICON SUPPORT: 19

ADD ICONS FOR THE PUBLISHED APPLICATION IN THE DEPLOY DIRECTORY 19

SUPPORT..... 20

INDEX..... 21

ABOUT EXTENTRIX 22

SAP ENTERPRISE PORTAL CONFIGURATION

This section provides the details on how to import Extentrix Toolbar iView using the files provided in the ExtentrixToolbarForCitrix.zip file downloaded from the Extentrix Toolbar for Citrix page (<http://www.extentrix.com/SAP/Index.htm>). In this section, it is assumed that the developer creating the iView and configuring the portal is familiar with navigation and administration of a SAP Enterprise Portal.

The toolbar has been certified for the component SAP EP 7.0 via SAP integration scenario EP-BP 6.0.

Note: it may work on other portal versions, but it has just tested on this version

PREREQUISITES

To enable users to run Extentrix Toolbar for Citrix, all you need to do is install it and configure the individual iView as required, because it is automatically integrated in the portal user role.

- Users must install Microsoft Internet Explorer 6.0.
- Administrator must install Extentrix Web Services 2.0 – Application edition. This would require IIS 6.0 or higher. And for more information about installing Extentrix web services 2.0 – Application Edition refer to <http://www.extentrix.com/Web%20Services/Index.htm>
- Citrix Presentation Server 4.x. You need FP1 to be installed to support icons with size 16*16; otherwise you need to put the icons inside the iView deployment directory (described later).
- Extentrix Toolbar for Citrix has to be compiled by Extentrix to reflect the customer web services backend.

CREATE EXTENTRIX TOOLBAR FOR CITRIX IVIEW

To create the iView, you need to implement the following sections:

- Import Extentrix Toolbar for Citrix to the portal
- Define an Alias for the System
- Pre-Install Steps
- Place iView on Page
- Configure User Mapping

IMPORT EXTENTRIX TOOLBAR FOR CITRIX TO THE PORTAL

In this step you have to import EPA archives “ExtentrixToolbarforCitrix.epa” into the portal.

- Extract ExtentrixToolbarForCitrix.zip file, you will find inside it ExtentrixToolbarforCitrix.epa
- Navigate to System Administration → Transport → Transport Packages → Import
- Specify to import from client or server according where the “ExtentrixToolbarForCitrix.epa” file is located
- Select ExtentrixToolbarforCitrix.epa file and upload it to the server. The upload folder is automatically created in the import directory with the corresponding user ID. The individual objects are listed in the object preview.
- Specify whether or not the existing portal content may be overwritten by the import.
- Start the import process.

Once the import has been completed, you can check if the objects were correctly imported using the log. If the import was successful, the object has status OK.

DEFINE AN ALIAS FOR THE SYSTEM

To create the alias for the system, first make sure that the system is open in the System Landscape Editor. Proceed as follows:

1. Navigate to Portal Content - Content Provided by Other Vendors – End User Content - Extentrix Toolbar For Citrix – Systems - AppWSSystem
2. In the Display dropdown list box, choose System Aliases.
3. Specify a name for the system alias, for example *MySystem*. Add the defined alias by choosing Add. (we recommend to name it EXT_R1, because if you forget to pass the system alias as a parameter (as we will describe later) we assume that the system alias is EXT_R1)

To save your changes, choose Save.

EDIT SYSTEM WEB AS PROPERTY

Navigate to Portal Content - Content Provided by Other Vendors – End User Content - Extentrix Toolbar For Citrix – Systems - AppWSSystem

From the **Property Category** chose **Web Application Server (Web AS)** and set the values as following:

- Web AS Host Name: [Your web AS host]

Property Editor - APPWSSystem

Property Category: Web Application Server (Web AS) ▼

▶ Web AS Description

▶ Web AS Host Name jwdfvm2160.wdf.sap.corp:51000

▶ Web AS Path /webdynpro/dispatcher/

▶ Web AS Protocol http ▼

PRE-INSTALL STEPS

- Create or identify an account or accounts within SAP Enterprise Portal to manage the iView. In a production environment, it is a good idea to create/identify several accounts with administrator privileges for the iView. This will allow the control of the iView to be delegated.
- The users created or identified in the previous step can be added to a group to simplify the administration process.
- If a page does not already exist to host the iView, create a new page within the portal.

- Assign the account or accounts created/identified in the first step with the appropriate privileges to manage the iView and any pages that the iView will be placed on.

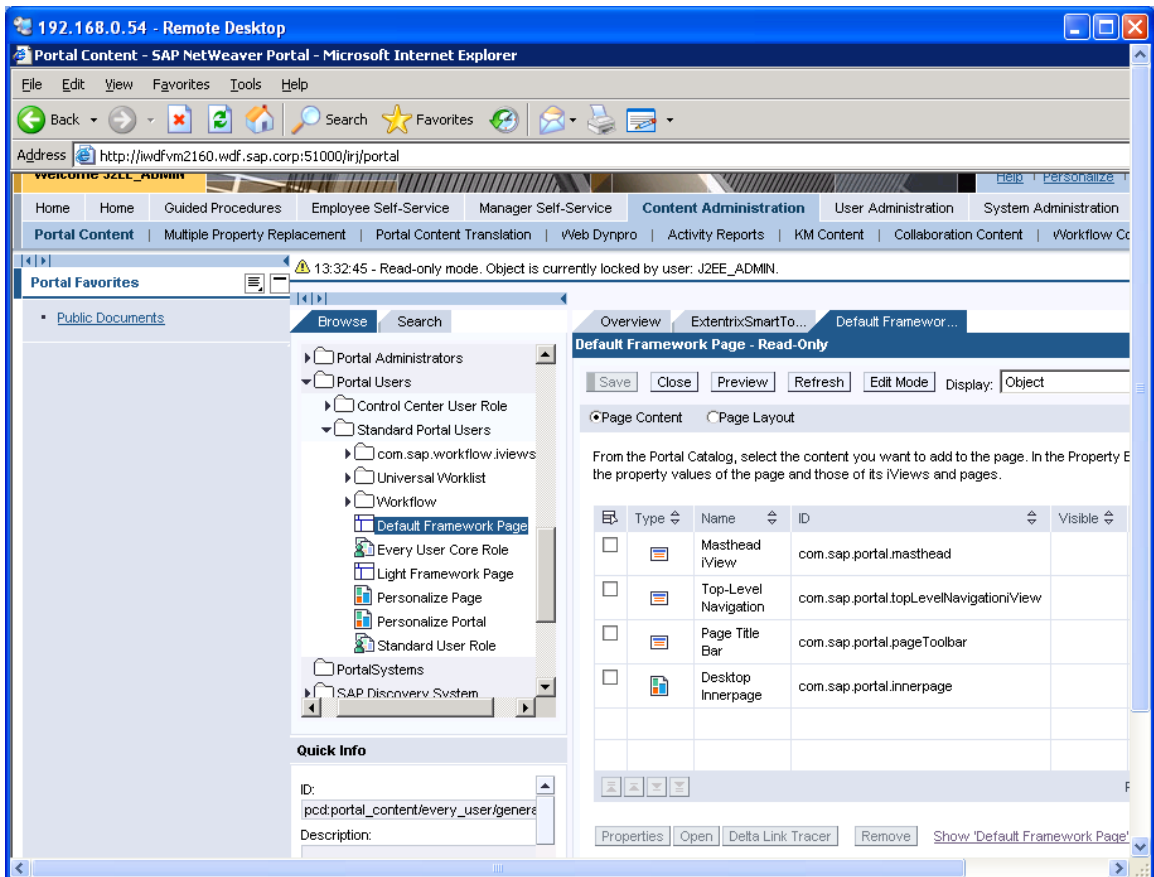
PLACE THE IVIEW IN A PAGE

There are several ways to place iViews on a page within the SAP Enterprise Portal. The following steps detail how to add the iView to an existing page.

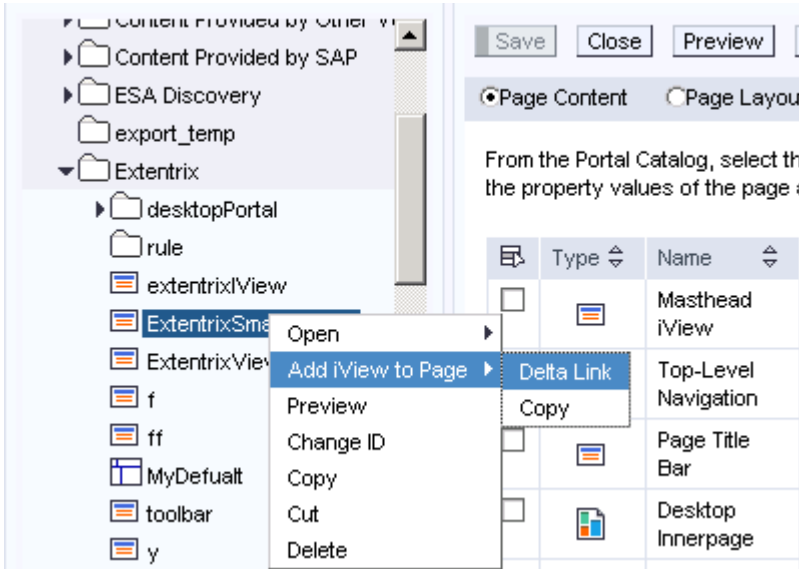
1. Navigate to the Content Administration Tap
2. Select the Portal Content Folder on the left panel of the page
3. Select the appropriate sub-folder which contains the page which the iView will be placed on.

We recommend that you add the toolbar to the page:

Portal User → Standard Portal Users → Default framework page



4. While the page is open navigate to the iView of Extentrix Toolbar for Citrix.
5. Right click the iView, select **Add iView to Page**. There will be an option to select either **“Copy”** or **“Delta Link.”** It is recommended that **“Delta Link”** is selected.



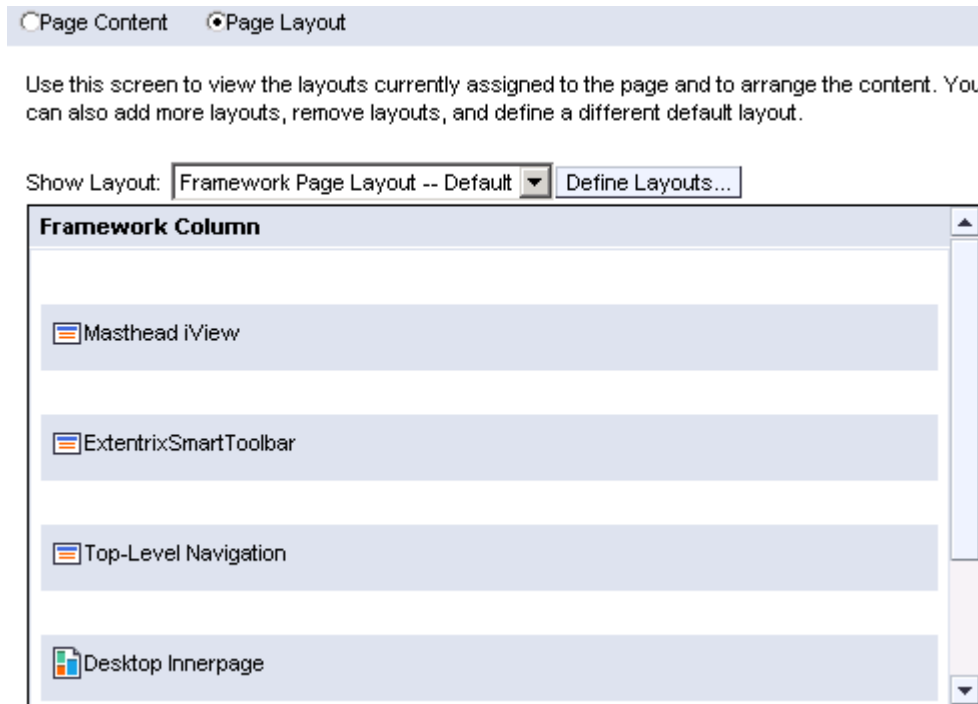
6. Check the check box beside the toolbar iView then click **Properties**.
7. In the Property Editor it will open for ExtentrixToolbar object. Set the following properties:
 - Set the height to 28

▶ Fixed Height (Pixels)

- Set the **“Show Tray”** to No

▶ Show Tray Yes No

8. Select Page Layout and put the toolbar iView after the Masthead iView



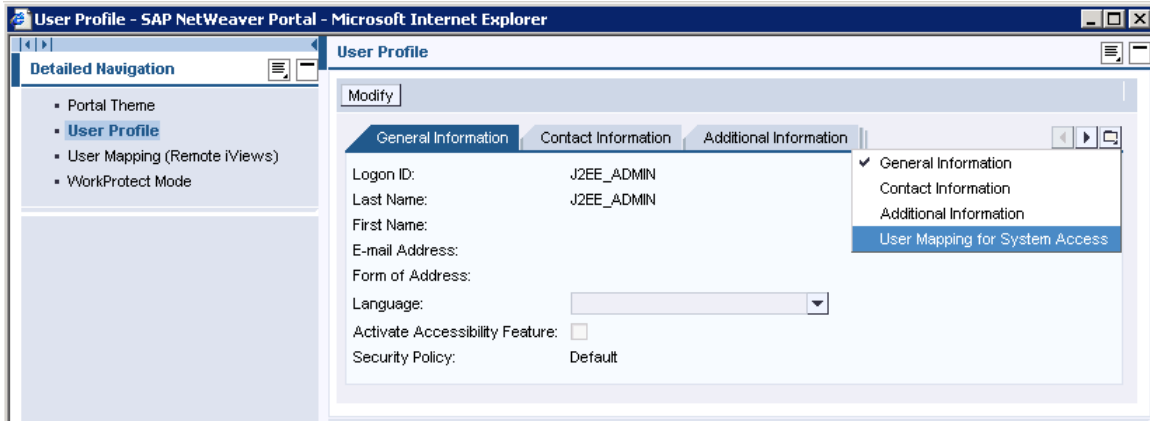
9. And click **Preview** to see how the page will look

After importing the packages, the Alias for the system has to be set.

CONFIGURE USER MAPPING

To use SSO **LoginType** for user authentication, each user should map their credentials to a Citrix Presentation Server as follows:

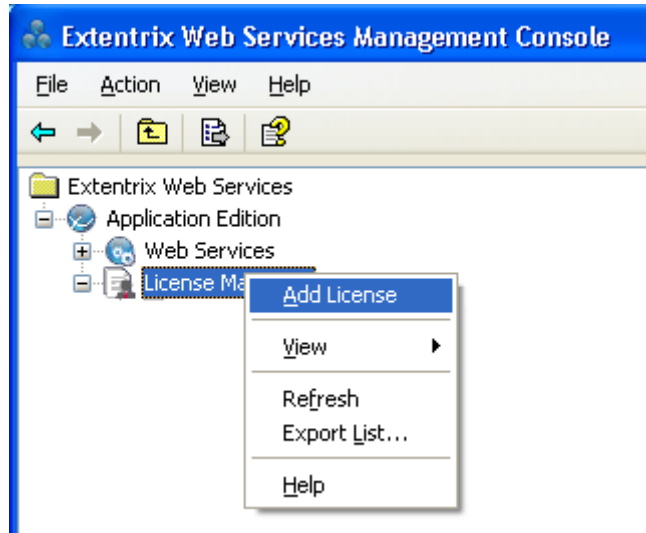
- From the personalize page go to **User Profile**
- Select **User Mapping for System Access**



- Select the **System Alias**
- At this time the **Modify** button will be enabled, click it.
- Insert your credentials
- Save the changes, click the **Save** button.

LICENSE ACTIVATION**Add License for Extentrix Toolbar for Citrix**

- Right click the **License Manager** Node and click **Add License**.



- The following form will appear.

sales@extentrix.com providing the following machine information'. There are two sections: 'Machine Information' and 'License'. The 'Machine Information' section contains two text boxes: 'Machine Name' with the value 'CPS45-03-003' and 'MachineID' with the value '992431B9'. The 'License' section contains a text box with the prompt 'Enter a valid license key' and an empty input field. At the bottom right, there are two buttons: 'Activate' and 'Cancel'."/>

Add License

You can request your license from sales@extentrix.com providing the following machine information

Machine Information

Machine Name

MachineID

License

Enter a valid license key

- If you don't have a key for the product, send the sales sales@extentrix.com an email requesting one.

Note: you send us the email by clicking on the sales@extentrix.com link in the previous form.

Add License

You can request your license from sales@extentrix.com providing the following machine information

Machine Information

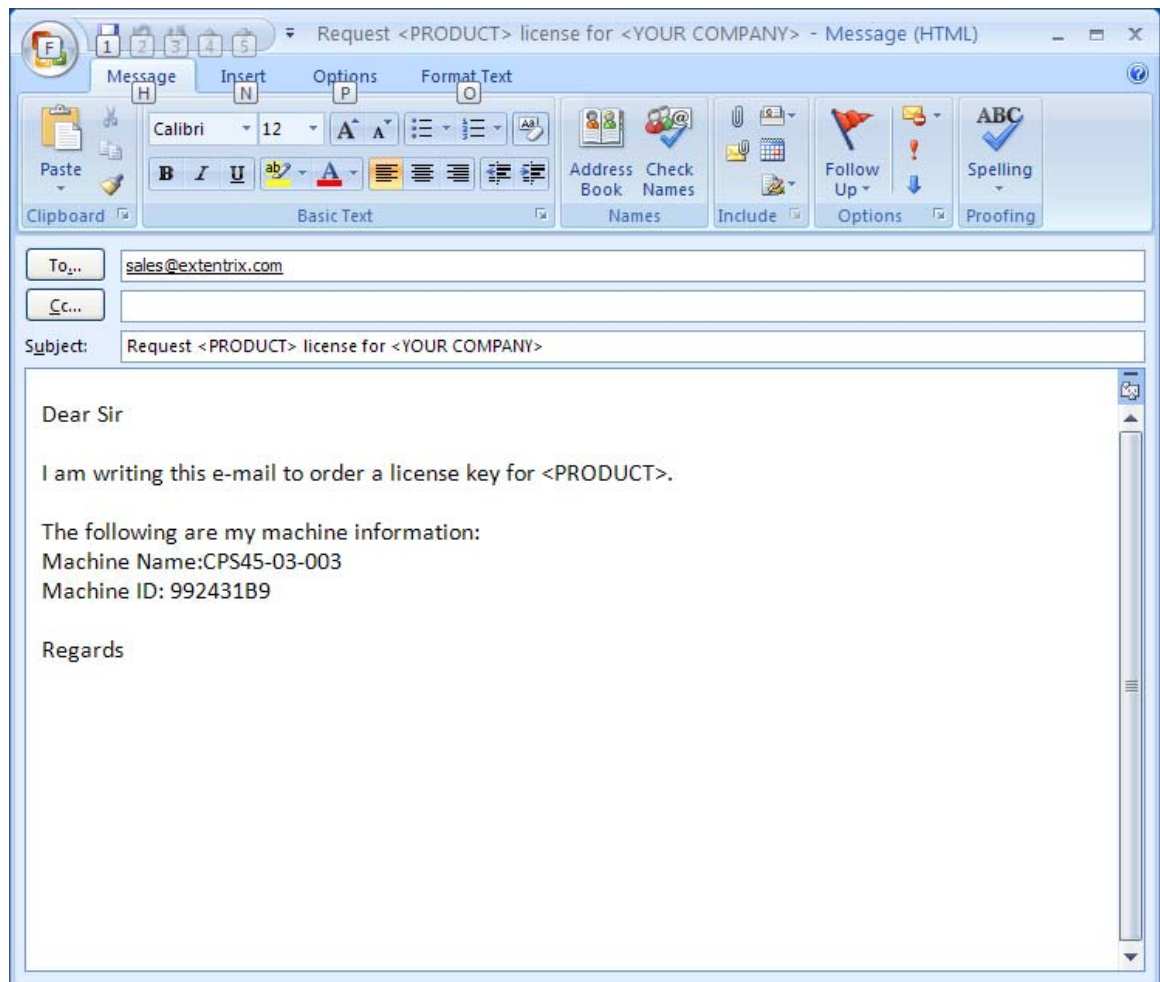
Machine Name

MachineID

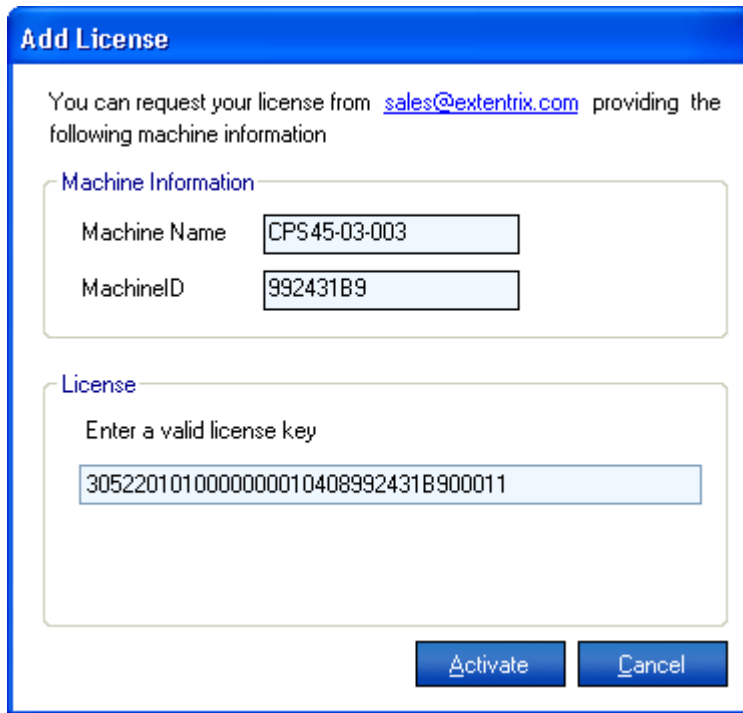
License

Enter a valid license key

Clicking it, the following form will appear.



- In **Subject** text book replace the <PRODUCT> with 'Extentrix Toolbar for Citrix', and replace <YOUR COMPANY> with your company name.
- Extentrix sales team will reply you with the product key. Copy it and insert it in the **Enter a valid License key** field. And click **Activate**.



Add License

You can request your license from sales@extentrix.com providing the following machine information

Machine Information

Machine Name: CPS45-03-003

MachineID: 992431B9

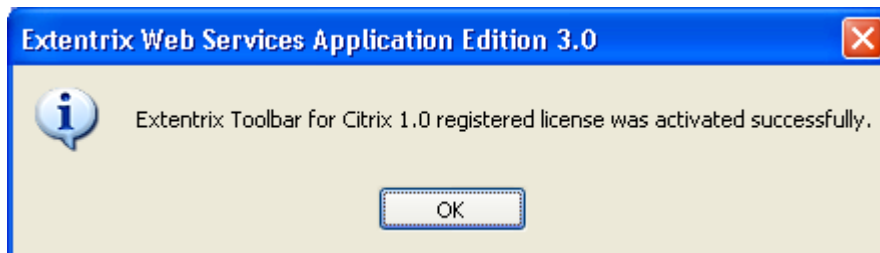
License

Enter a valid license key

3052201010000000010408992431B900011

Activate Cancel

Then a notification message appears to tell you if it was a valid key or not.



DEPLOY EXTENTRIX TOOLBAR FOR CITRIX IVIEW

Start the SAP Software Deployment Manager over the file "RemoteGui.bat". Connect to your System and select the tab "Deployment". Push the button "add SCA/SDA to Deployment List" and choose the ear file (from client or server according where the "ExtentrixToolbarForCitrix.ear" file is located) at the first step of deployment. Then select the "Next"-button. At the second step select the "Next"-button. Start the deployment at the third step. If everything is ok, you will get the accordant message and push the "Confirm"-button to complete the deployment. Now disconnect from the SDM Tool.

EDIT EXTENTRIX TOOLBAR FOR CITRIX CONFIGURATION SETTINGS

To change the default Extentrix Toolbar for Citrix settings open the Settings.config file

e.g.

D:\usr\sap\ERP\DVEBMGS10\j2ee\cluster\server0\temp\webdynpro\web\local\ExtentrixToolbarForCitrix\Components\com.extentrix.pct.toolbar_for_citrix.ExtentrixToolbarForCitrix\conf\Settings.config

And change the settings as follows:

1. EnableLogging=false

Logging Information: it is used for support issue, by defaults it is disabled and it has to be enabled under instructions from Extentrix Support Team.

2. LogoURL=http://www.extentrix.com

The web site link for logo appears on the left side of the toolbar, you can change it to any web site you want, but make sure if the link is not relative to your portal then add http://

3. NumOfApplicationsToShow=20

Number of application that will be shown at the same time in the toolbar, if you have published application more than this number, then the next-previous buttons will appear

4. System=EXT_R1

System landscape alias where the credentials will be saved and used if the user chose SSO as a login type (described later)

5. HttpProxyHost=

6. HttpProxyPort=

You HTTP proxy settings, that's needed to connect to Extentrix Web Services Application Edition 2.0 if it is hosted on different server or different network.

7. LoginType=SSO

Determine the Login mode of the portal, (Pass-Through, SSO). If you don't send it, by default it is **Pass-Through**.

- **Single Sign On (SSO):** The portal user enter their credentials into the Credential Vault on the SAP Enterprise Server before accessing Extentrix Toolbar for Citrix iView. Upon accessing the iView, the user is automatically authenticated using credentials stored in SAP's Enterprise Server Credential Vault.
- **Pass-Through:** Extentrix Toolbar for Citrix iView leverages the credentials used for the SAP portal authenticate. If the authentication fails, the iView look for the credentials following the same process depicted above in the SSO. If the authentication fails the user is required to enter credentials manually in a login form.

SUPPORT ICONS WITH SIZE 16*16

To support icons with size 16*16 for the published application:

ENABLE 32-BIT COLOUR ICON SUPPORT:

- First you need to install Feature Pack 1 for Citrix Presentation Server 4.5
- Open Citrix Management Console, navigate to Farm properties / Presentation Server / General and enable it.

ADD ICONS FOR THE PUBLISHED APPLICATION IN THE DEPLOY DIRECTORY

If you don't have FP1 installed on your Citrix Presentation Server, then your Presentation Server is not supporting icons with size 16*16, so you need to add the icons for the published application in the deploy directory of the iView to be shown in the toolbar; otherwise the default icon will be shown instead.

To add the icons to the deploy directory:

- Get the icons for the published applications with size 16*16 and format PNG or GIF and with the same name as the corresponding published application
- Copy the icons
- Go the deploy directory

e.g.

D:\usr\sap\ERP\DVEBMGS10\j2ee\cluster\server0\temp\webdynpro\web\local\ExtentrixToolbarForCitrix\Components\com.extentrix.pct.toolbar_for_citrix.ExtentrixToolbarForCitrix\img

- Paste the icons in the image directory.

SUPPORT

Support for Extentrix Toolbar for Citrix is available at [Extentrix Forum](#)

For any support issues, please email your questions or problems to: support@extentrix.com

INDEX

C

Configuration, 3

Configure User Mapping, 8

Create Extentrix Toolbar for Citrix iView, 4

D

Define an Alias for the System, 4

I

Import Extentrix Toolbar for Citrix to the portal, 4

P

Place the iView in a page, 5

Pre-Install Steps, 5

Prerequisites, 3

S

support, 9

ABOUT EXTENTRIX

Founded in 2006, Extentrix Systems is a leading software development company specializing in virtualization and developing custom software solutions for Microsoft and Citrix customers. Established by former software engineers at Citrix, Extentrix have developed access solutions that simplify and speed users' access to Terminal Services and Citrix platforms.

Extentrix Systems is privately held with company headquarters in RAK, UAE. For more information, please visit the company's Web site at www.extentrix.com or call +971-4-208-8496.

For additional support in developing new Toolbars or customizing the current one, please contact Extentrix at info@extentrix.com or by visiting the company's home page at <http://www.extentrix.com/>.